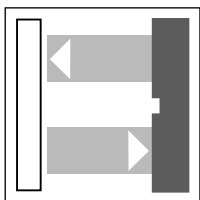


## Series -F22



### Diffuse reflective photoelectric sensor

OCT500-F22-A0-V15  
OCT500-F22-A2-V15



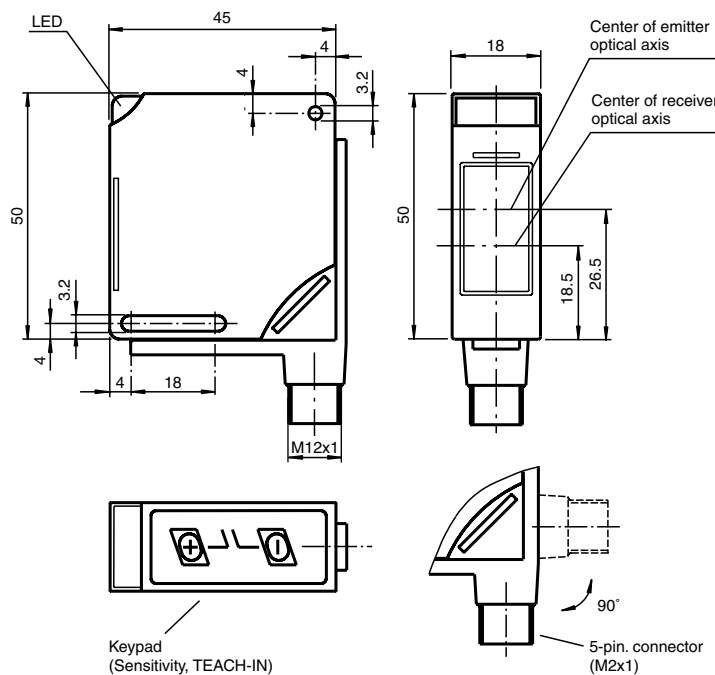
500 mm



### Features

- Diffuse reflective sensor for standard applications
- Visible red light
- Automatic adjustment of the switching points (sensitivity) via TEACH-IN
- Pre-fault indication and output (dynamic and static)
- Multifunction input
- Parameterisable via optical communication link (e.g. free step values for time function)
- Connector (M12x1) 90° adjustable position
- Protection class IP68
- All materials approved for food industry applications

## Dimensions

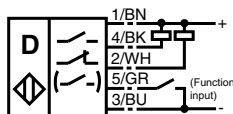


Connectors, mounting accessories etc... see "accessories" section

e.g. connectors: V15-G-2M-PVC (straight)  
V15-W-2M-PUR (angled)

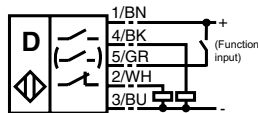
### Electrical connection

A0:



- 1 - Supply +
- 2 - inverted switch output or pre-fault output (programmable)
- 3 - Supply -
- 4 - Switch output
- 5 - Control input

A2:



## Technical data

### Valid for the whole family

#### General specifications

Sensing range	0 ... 500 mm
Adjustment range	50 ... 500 mm
Reference target	Standard white 100 mm x 100 mm
Light type	Red light 660 nm
Diameter of the light spot	25 mm at a distance of 500 mm
Ambient light limit	≤ 10000 Lux sun light ≤ 7500 Lux halogen light
Standard conformity	EN 60947-5-2

#### Electrical specifications

Rated operational voltage	$U_e$	10 ... 30 V DC , ripple 10 % <sub>SS</sub>
No-load supply current	$I_0$	≤ 25 mA
Time delay before availability	$t_v$	≤ 80 ms (with time delay before availability)

#### Indicating/operating means

LED yellow	Switching state
LED green	Power on, blinking with 2 Hz or 4 Hz in TEACH-IN mode
LED red	2 Hz flashing: pre-fault indication 65 ms: press the key to quit 1.5 s: fault by TEACH-IN
Key	+/- for the adjustment of the sensing range and teach in

#### Output

Rated operational current	$I_e$	200 mA , every output
Voltage drop	$U_d$	≤ 2.5 V
Switching frequency	$f$	≤ 1 kHz
Switch-on delay	$t_{on}$	0.5 ms
Range hysteresis	H	parameterisable

#### Input

Internal resistor		≥ 12 kOhm
Switch-on delay	$t_{on}$	≤ 3 ms
Switch-off delay	$t_{off}$	≤ 3 ms

#### Ambient conditions

Ambient temperature	-25 ... 70 °C (248 ... 343 K)
Storage temperature	-40 ... 70 °C (233 ... 343 K)

#### Mechanical specifications

Protection degree	IP68 according to EN 60529
Connection type	connector V15 (M12 x 1), 5 pin, rotatable through 90°

#### Material

Housing	PBT
Light exit	Scratch resistant plastic plate
Connector	AlSi
Dove tail	AlSi
Mass	60 g

### Version data

#### Model number

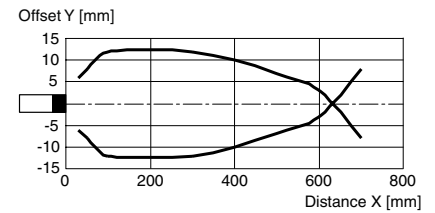
	OCT500-F22-A0-V15	OCT500-F22-A2-V15
Output type	2 switch outputs npn, parameterisable as - NO/NC (antivalent) - NO and pre-fault indication - NC and pre-fault indication	2 switch outputs pnp, parameterisable as - NO/NC (antivalent) - NO and pre-fault indication - NC and pre-fault indication
Input type	1 control/test input, non active: ≥ 7 V or open; active: ≤ 3 V	1 control/test input, non active: ≤ 3 V or not connected; active: ≥ 7 V

## Model number

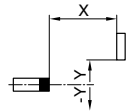
OCT500-F22-A0-V15  
OCT500-F22-A2-V15

## Characteristic curves

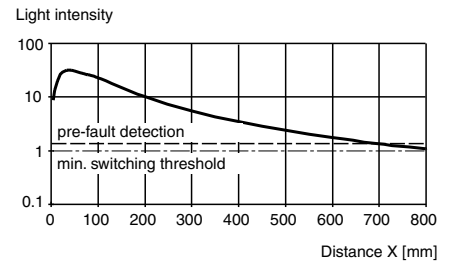
### Characteristic response curve



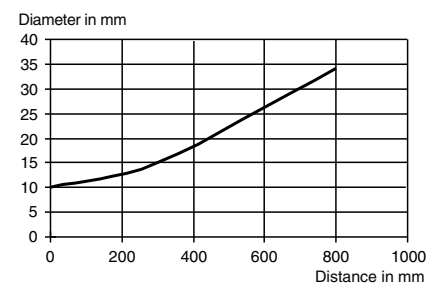
Permissible distance (offset) between optical axis and object.



### Relative Light Intensity



### Light spot diameter = f (Distance)



— Typically