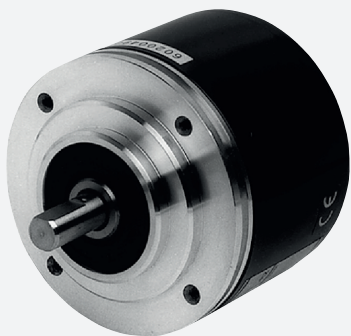


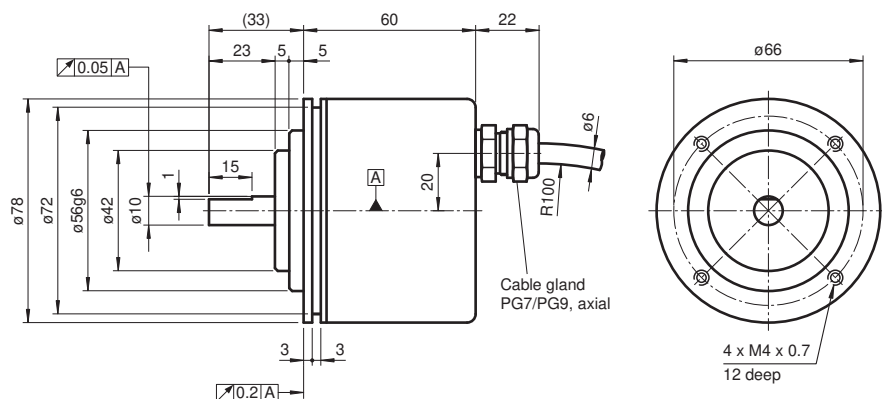
Incremental rotary encoder TRD-G



- Up to 100 ppr
- NAMUR interface in accordance with DIN EN 60947-5-6



Dimensions



Technical Data

General specifications

Pulse count max. 100

Electrical specifications

Operating voltage U_B 8 V DC

Output

Output type NAMUR

Load current max. per channel 3 mA, short-circuit protected

Output frequency max. 1 kHz

Connection

Cable $\varnothing 6$ mm, 4 x 0.38 mm², 2 m

Standard conformity

Degree of protection DIN EN 60529, IP65

Shock resistance DIN EN 60068-2-27, 100 g, 3 ms

Vibration resistance DIN EN 60068-2-6, 10 g, 10 ... 2000 Hz

Standards DIN EN 60947-5-6 (NAMUR)

Ambient conditions

Operating temperature

Release date: 2022-04-21 Date of issue: 2022-12-12 Filename: t2441_eng.pdf

Refer to "General Notes Relating to Pepperl+Fuchs Product Information".

Pepperl+Fuchs Group
www.pepperl-fuchs.com

USA: +1 330 486 0001
fa-info@us.pepperl-fuchs.com

Germany: +49 621 776 1111
fa-info@de.pepperl-fuchs.com

Singapore: +65 6779 9091
fa-info@sg.pepperl-fuchs.com

PF PEPPERL+FUCHS

Technical Data

Plastic disk	-10 ... 50 °C (14 ... 122 °F)
Storage temperature	
Plastic disk	-25 ... 85 °C (-13 ... 185 °F)
Mechanical specifications	
Material	
Housing	aluminum
Flange	3.1645 aluminum
Shaft	Stainless steel 1.4305 / AISI 303
Mass	approx. 630 g
Rotational speed	max. 3000 min ⁻¹
Moment of inertia	100 gcm ²
Starting torque	< 5 Ncm
Shaft load	
Axial	50 N
Radial	100 N
Data for application in connection with hazardous areas	
EC-Type Examination Certificate	ATEX approval is pending
Group, category, type of protection	Ⓜ EEx ib IIC T6

Accessories

	9312-3	Synchro clamping element
--	---------------	--------------------------

Function

An optical sampling system is used in incremental rotary encoders of the series TRD-G.

One special feature is the mechanical versatility of the flange. The rotary encoder has a centering collar with a diameter of 42 mm and one with a diameter of 56 mm. In addition to the four M4 holes, the incremental rotary encoder has a servo infeed on the circumference. This allows you to make a slight adjustment to the reference point of the incremental rotary encoder by turning the housing. The clamping element that grips into the servo infeed ensures that the incremental rotary encoder stays firmly in place without slipping out of adjustment.

Connection

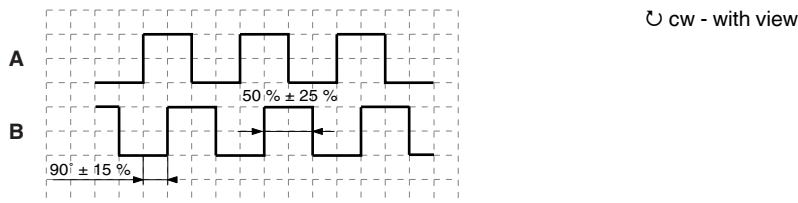
Electrical connection

Signal	Cable Ø6 mm, 4-core
A _{NAMUR+}	White
A _{NAMUR-}	Yellow
B _{NAMUR+}	Red
B _{NAMUR-}	Black

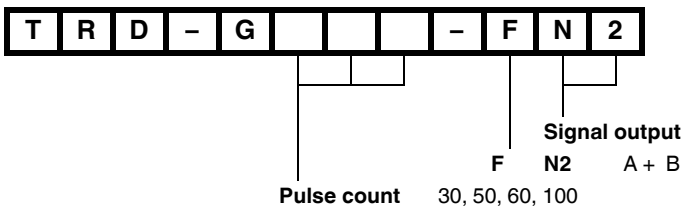
The circuits A and B are not connected and not grounded.

Operation

Signal outputs



Order code



Release date: 2022-04-21 Date of issue: 2022-12-12 Filename: t2441_eng.pdf